

Details

DECKEL FP1

repowered by FPS

FP1 2101 – conventional



3 axis digital touch display Heidenhain ND 7013

7-inch screen for touch operation.
Easy to use actual value display with radius correction for 100 tools, furthermore hole circle, hole segment, hole row and hole frame calculation graphically supported. The display has 100 programmable reference points and a cutting data calculator. Machine functions such as motor brake on/off, spindle start/stop, emergency stop, are clearly organized on the control panel.

Highest precision due to direct path measuring systems in all axes.

Positioning accuracy **0,005 mm**



With additional emergency stop

Due to safety reasons an additional emergency stop button is equipped on the machine.

Details



Vertical milling head

The milling head can be swiveled $\pm 90^\circ$ and can be positioned in any number of degrees via a scale.



Horizontal working

For horizontal working the milling head must be swiveled by 90° and pushed backwards.

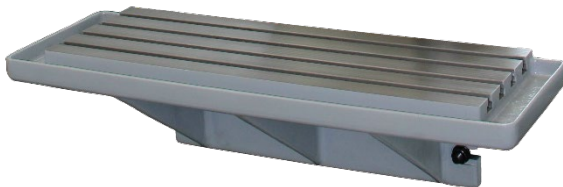


Vertical spindle

The vertical spindle is manually telescopic by **60 mm** and can be used as a drilling quill. The telescopic quill has a clamping feature.

Details

Fixed table



The fixed table is included in the basic equipment of the machine. It has a clamping surface of **600 x 210 mm** and the max. load is **200 kg**. The fixed table has **four 12H7** slots with a distance of **45 mm**.



Handwheels

Mechanical manual safety handwheels with additional scale ring in all axes with precision mechanical drive and sensitive response. The handwheels are arranged ergonomically and user-friendly for maximum ease of operation.



Handwheel scale

In addition to the digital display, a scale on the handwheel allows positioning in all axes.

Details



Linear scale

The linear scale serves as a rough scale for an overview of the working position of the respective axis.



Spindle speed 40 – 2000 rpm

High-torque direct drive with **8 gear stages** for high efficiency and maximum milling performance on the milling spindles.

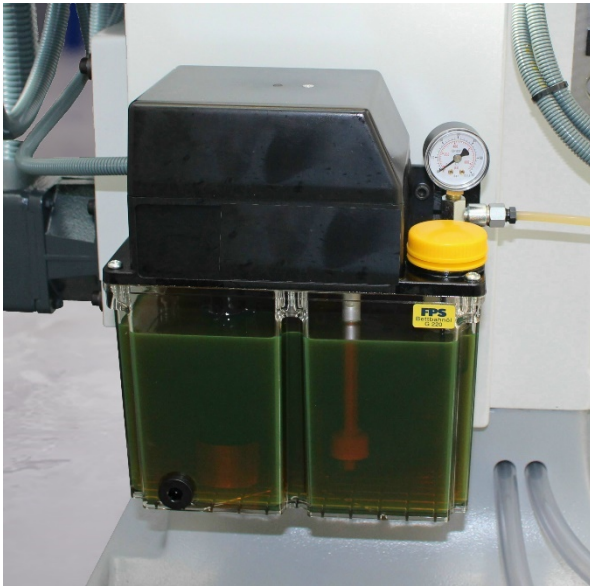


Measuring system

The machine is equipped with a **direct** measuring system through glass scales in **all axes X Y Z**.

Maximum precision due to direct position measuring system as **standard**.

Details



Option:

Automatic central lubrication:

Automatic central lubrication can be retrofitted to all conventional DECKEL machines as a useful option.